



Images of Stillwater

A Pictorial Narrative of the Birthplace of Minnesota

by Tom Brewitz



Images of Stillwater

A Pictorial Narrative of the Birthplace of Minnesota

Published by Cornermark®

Photography: Tom Brewitz

Author: Tom Brewitz

Editor: Bill Johnson

Thanks to: Kristine Brewitz, Gary Elert, Gail Hovland, Tom and Sandy Lynam, Tracy Mazanec, Carolyn Phelps, Kate Vichich, Greg Wires

Printed in Minnesota

www.Cornermark.com

Email: sales@cornermark.com

2010 Copyright ©Cornermark® All Rights Reserved

Contents

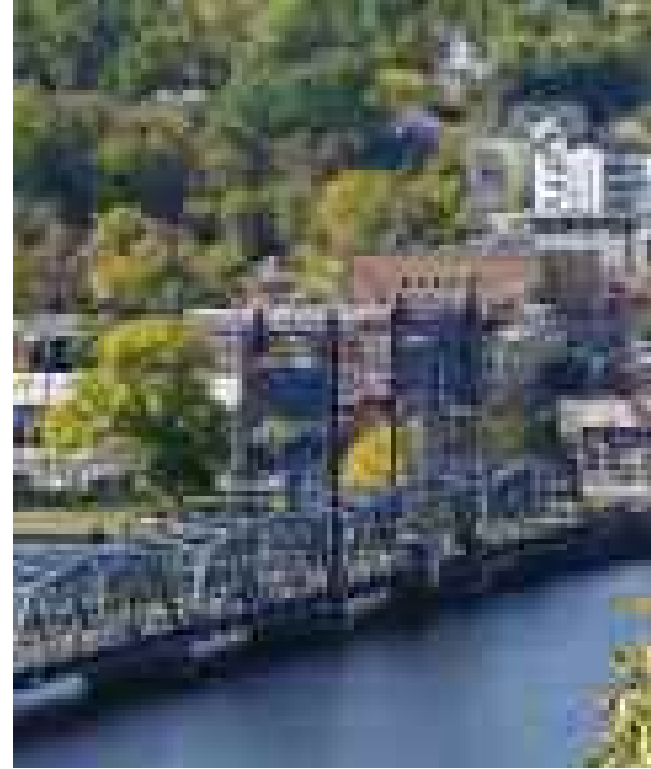
Cover	Boomsite view of the Andiamo paddlewheeler and cliffs
Page 3, 6, 7	Stillwater Lift Bridge
Page 4	How Stillwater, became a city
Page 8 - 9	Main Street Stillwater
Page 10 - 11	Stillwater Churches
Page 12 - 13	Historic Courthouse, Warden's House
Page 14 - 17	Bed & Breakfast Inns
Page 18 - 19	Commander and Sawmill
Page 20 - 21	Paddlewheel Riverboats
Page 22 - 23	Hot-air Balloon Rides
Page 24 - 25	Minnesota Zephyr
Page 26 - 32	Bonus photos: Panoramic views, boys at Lily Lake



The Stillwater Lift Bridge

Exploring multiple angles and times of day, many views of the Stillwater lift bridge are captured in panoramic views and detail. Linking Stillwater, Minnesota, with Houlton, Wisconsin, this centerpiece of the St. Croix Valley features seven spans of 140 feet each, including the lift section.

The bridge receives a great deal of attention from local artists, historians and visitors alike. Still in operation, the nostalgic architecture of the lift bridge reminds us of how small the first automobiles to cross the St. Croix River were.



About the pictures . . .

Images of Stillwater is a photo collection of Stillwater, Minnesota, with historic landmarks, bed and breakfasts, paddlewheel boats and more. It details the spectacular scenic beauty and remarkable charm of the St. Croix River Valley surrounding Stillwater. Each page is a study of a particular location or subject as a pictorial account.

Some photos are available as large prints, on canvas and paper, for your home or office.





How Stillwater became a city . . .

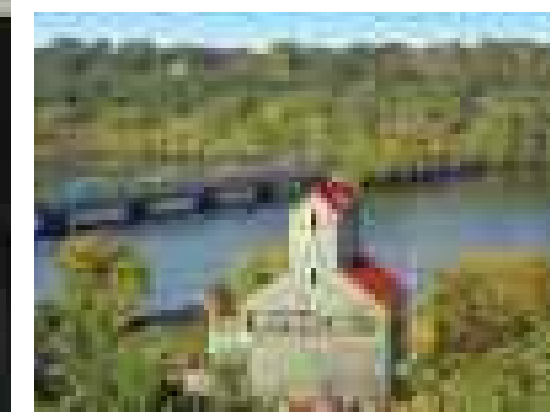
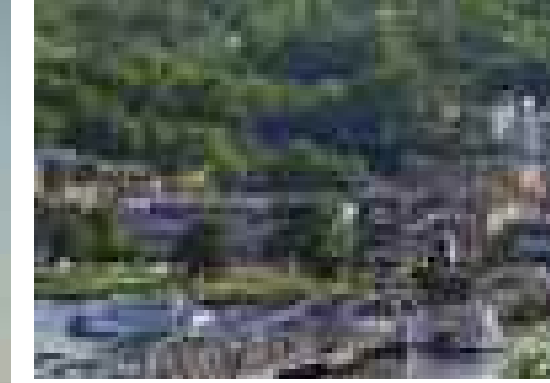
Stillwater became a city in 1854 and remains a captivating place for its historic significance, famous riverboats, bustling collection of shops, and views of the St. Croix River. Stillwater began as a lumbering town because of its connections to Minnesota's and Wisconsin's vast pine stands. Positioned where the St. Croix widens and becomes still, Stillwater established steam-powered mills and was a major source of timber that fueled a building boom during the mid-1800s.

With breathtaking bluffs overlooking the river waters below, memorable places to stay, celebrated restaurants and festive events, the town known as the "Birthplace of Minnesota" was transformed into a unique destination for tourists and travelers.

Meticulously put in book form as a record for current and future generations, *Images of Stillwater* provides a distinct visual account of an area of America that inspires artists and generates return visitors.

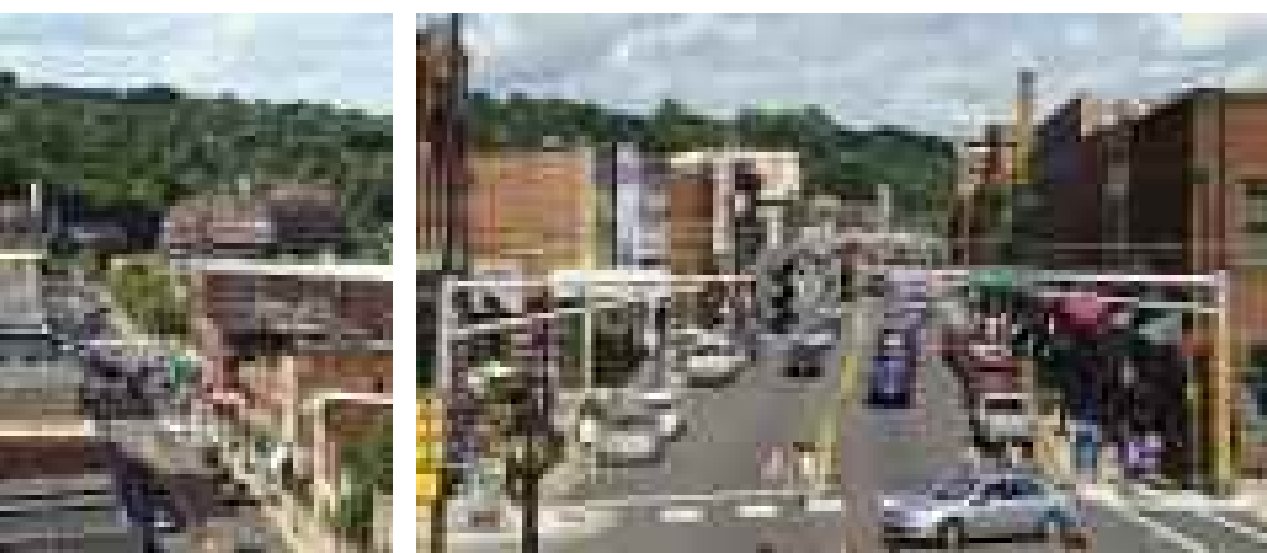
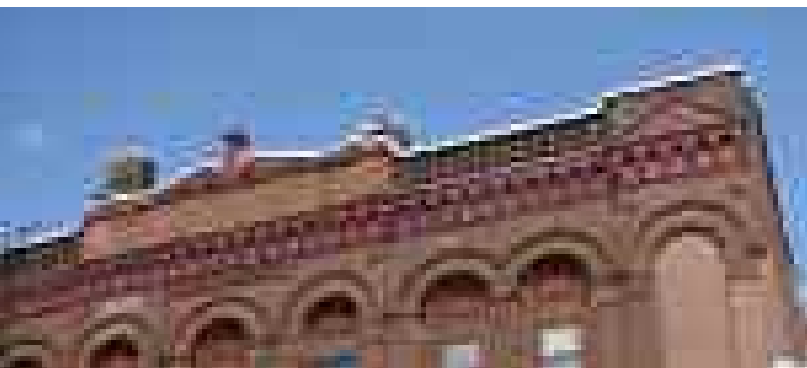
Enjoy the exceptional results of this effort as you thumb through the pages of *Images of Stillwater*.





Main Street, Stillwater

Stillwater is home to architecture as old as Minnesota itself with ornate facades lining the streets of downtown. The classic “Main Street USA” structural appearance is captured in an ensemble of two- and three-story buildings that add to the appealing character of this vibrant city.

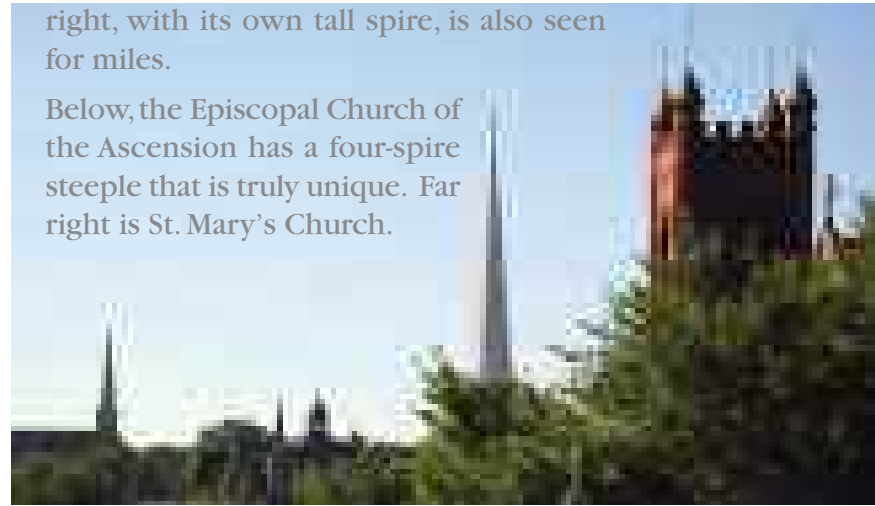




Stillwater Churches

Pictured at left is the Church of St. Michael, completed in 1857 and featuring the most visible steeple in Stillwater. Trinity Lutheran Church, on the immediate right, with its own tall spire, is also seen for miles.

Below, the Episcopal Church of the Ascension has a four-spire steeple that is truly unique. Far right is St. Mary's Church.





Historic Courthouse & Warden's House

The Washington County Historic Courthouse is seen from everywhere in the Valley and remains a prominent edifice and one of the Valley's most recognizable landmarks. Below is the Soldiers and Sailors Memorial dedicated in 1905 and Warden's House, which was built in 1853 to serve as a residence for the Minnesota Territorial Prison warden.



Stillwater Bed & Breakfast Inns

Many of the marvelous mansions that dot Stillwater were transformed into romantic bed-and-breakfast inns. Below is the William Sauntry Mansion, which is proudly listed on the National Register of Historic Places along with the adjoining meditation garden.

Queen Anne-style Victorian homes pictured on the following page are, top right: Ann Bean Mansion and, bottom right: the Elephant Walk Bed & Breakfast.





Stillwater Bed & Breakfast Inns

Left: Rivertown Inn with fountain and gazebo inset. Below left from top: The elegant Lowell Inn (downtown) and the Italianate Victorian James Mulvey Inn. Below right from top: The Victorian-style Aurora Staples Inn and the Queen Anne-style Lady Goodwood Bed & Breakfast.



Commander and Sawmill

As seen from great distances, the Commander grain elevator (below) and the Isaac Staples Sawmill (right) remain metal-sided structures, just as they were in the past.

Next page: Sightseeing is an informative adventure when taking a guided tour in a trolley carriage. Expanded in 2006, the Stillwater Public Library is a treasured community resource, originally constructed with funds from the Andrew Carnegie Foundation.



Paddlewheel Riverboats

Among the more visible modes of transportation on the St. Croix River are the paddlewheel riverboats. Visitors enjoy lunch and dinner cruises, as well as private charter cruises for wedding receptions or other important occasions. Pictured are the Andiamo, Anastasia, Avalon, Empress, and Jubilee paddlewheel riverboats en route with their passengers to experience traveling under the lift bridge and cruising along the limestone cliffs of the River Valley.

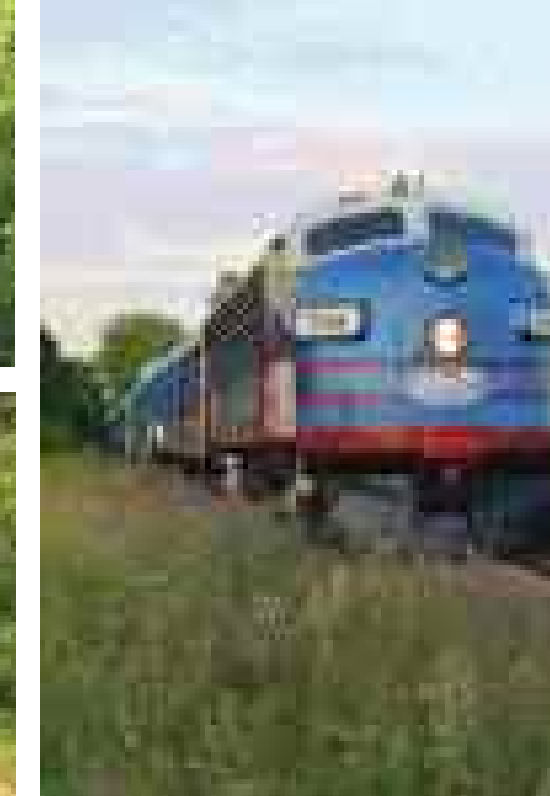




Hot-air Balloon Rides

Weather permitting, on many afternoons and evenings, hot-air balloons spread out on the Stillwater skyline and the St. Croix River Valley.

With scenic beauty abounding, soaring balloons provide amazing viewpoints to capture stunning sunsets and terrific vantage points of the dramatic rolling terrain.



Minnesota Zephyr

During its many years of operation, the Minnesota Zephyr carried passengers along the scenic St. Croix River Valley and through the woods of Stillwater. With fine dining, live 1940s music and spectacular picturesque vistas, riders were tantalized and entertained as they enjoyed a five-course meal, complete with champagne.

Pictured is the Zephyr as it traveled along the tracks, as well as the Stillwater Depot, where passengers, waiting to board, viewed artifacts and old photographs of the timber industry in its heyday.











Images of Stillwater was photographed and created by Tom Brewitz. In addition to photography, his work includes graphic design, corporate image consulting, magazine layout, editing and generating kinetic sculpture for Cornermark Fine Art®.





Images of Stillwater

by Tom Brewitz - Cornermark®

